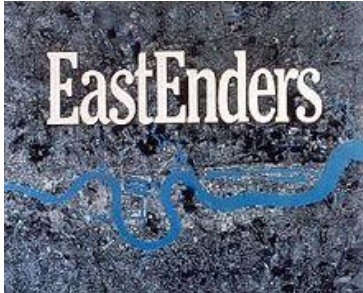




TV Quiz

EastEnders

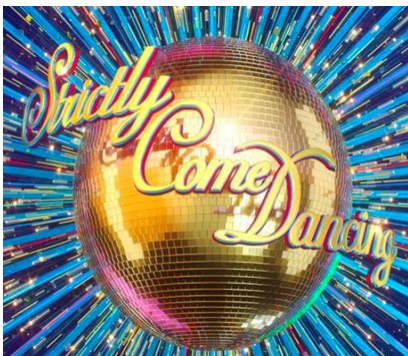


1. Who had a **hit** with the **EastEnders** **theme tune** "Anyone Can Fall in Love"?



2. Is the **alcohol** served in The **Queen Vic Pub** in **EastEnders** real?

Strictly Come Dancing



3. Who were the **presenters** of the **first episode** of **Strictly Come Dancing**?

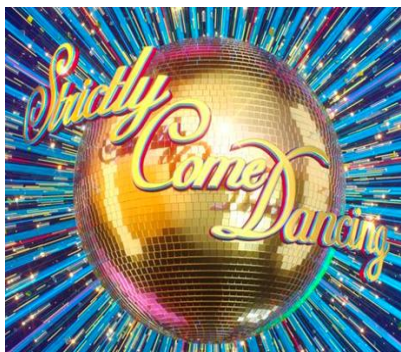


4. **How many** series of **Strictly Come Dancing** have there been?

Question of Sport



5. Who were the **team captains** of A **Question of Sport** between **2010** and **2020**?

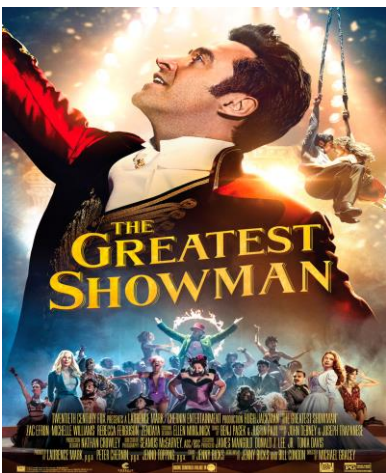


6. Which of the A **Question of Sport** **captains** appeared on **Strictly Come Dancing**?

Britain's Got Talent



7. What song did **Susan Boyle** sing in **2009** on Britain's Got Talent?



8. Who recently sang **Never Enough** (from The Greatest Showman) on **Britain's Got Talent**?

Britain's Got Talent



9. Who sang **This is Me** on **Britain's Got Talent**?

Neighbours



10. Who was the **first family** on **Neighbours**?



Thank you for joining in!
We hope you enjoyed our quiz!
- from the Champions group



Now it's time to find out how you did! Here come the **answers...**

Quiz answers

Eastenders



1. Who had a hit with the Eastenders theme tune "Anyone Can Fall in Love"?

Anita Dobson



2. Is the alcohol served in The Queen Vic in Eastenders real?

The **alcohol** in Eastenders is **not real!**

Strictly Come Dancing



3. Who were the presenters of the first episode of Strictly Come Dancing?

Bruce Forsyth and **Tess Daly**



4. How many series of Strictly Come Dancing have there been?

Strictly come dancing has **20 series!**

Question of Sport



5. Who were the team captains of A Question of Sport between 2010 and 2020?

Phil Tuffnell and **Matt Dawson**.

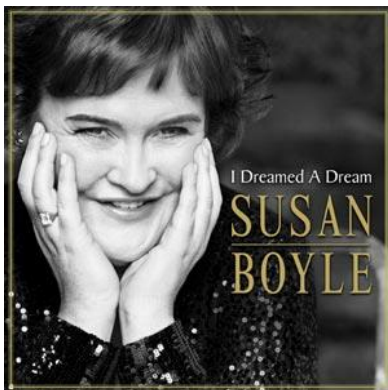


6. Which of the question of sport captains appeared on Strictly Come Dancing?

Phil Tuffnell and **Matt Dawson** danced on Strictly Come Dancing.



Britain's Got Talent



7. What song did Susan Boyle sing in 2009 on Britain's Got Talent?

Susan Boyle sang the song **I dreamed a dream** at Britain's Got Talent.

Britain's Got Talent



8. Who recently sang Never Enough on Britain's Got Talent?

Loren Red



9. Who sang This is Me on Britain's Got Talent?

Jade and Christian and the SignAlong group

Neighbours



10. Who was the first family on Neighbours?

The Ramsay family

Answers

1. Anita Dobson
2. No
3. [Bruce Forsyth](#) and [Tess Daly](#)
4. 20
5. Phil Tuffnell & Matt Dawson
6. Phil Tuffnell & Matt Dawson
7. I Dreamed a Dream
8. Loren Red
9. Jade & Christian & SignAlong
10. Ramsay Family