



## Include.org: Professional Volunteer Advisory Group

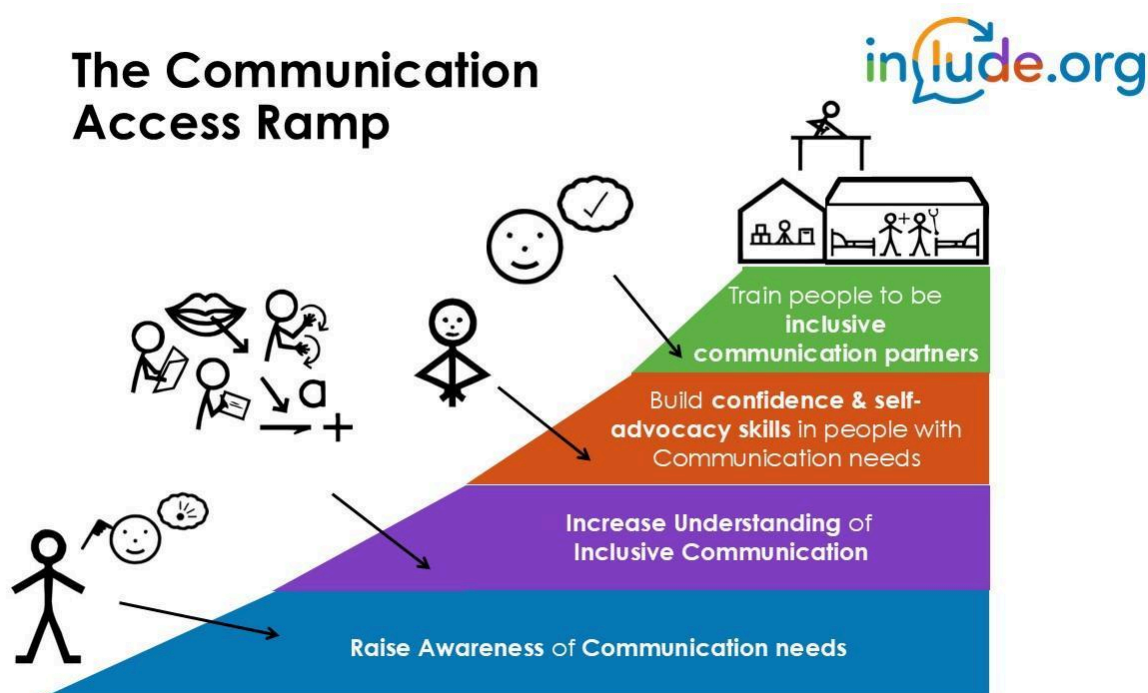
### How to get involved

#### What we do

**Include.org**'s vision is a world where no-one is left out because of their understanding or speaking difficulties. We provide community activities, training and consultancy, based on speech and language therapy evidence.

You can find out more about our services in [our brochure](#).

We know that some people need a ramp to gain physical access to their community and services. People with communication needs also need support to access what we take for granted and we are building that ramp.



Instead of bricks and mortar, people build the communication access ramp.

#### Why we do it

Around **1 in 5 people in the UK** will be affected by a significant communication difficulty at some stage in their life (through an acquired

condition like stroke or dementia, or a developmental condition like learning disabilities or autism).

Communication difficulties are at greatly increased risk of **isolation, mental health difficulties** and **health and social inequalities**, because of a lack of awareness, understanding and confident communication partners.

## How you can help

**Include** is serious about empowering people with communication needs and providing opportunities that people would otherwise miss out on. 80% of our Board of Trustees is made up of people with lived experience of communication needs. It matters to us that people who use our services have a say in how the charity is run.

In order to support the board effectively, we need to support our Trustees. This means that, as well as the one-to-one support and communication aids / adaptations to meetings and documents we provide, we also need experts in their field to help us support our Board to reach their potential. This is our **Professional Advisory Group**.

## The Professional Advisory Group

Our Professional Advisers work alongside our Board and Senior Leadership Team to support us by sharing their expertise in different fields.

The time commitment is variable according to availability and current organisational priorities or queries.

The role can be remote or in person – we just ask that advisors are available to answer questions by email, and occasionally attend meetings either remotely or in person with the Board or subcommittees.

Becoming a professional advisor is a great way to support an exciting local charity and develop experience and skills which you will not get elsewhere. This is a voluntary role: all travel or other expenses will be covered.

We are particularly keen to recruit Professional Advisors from **Fundraising, Business Development, Health, Social Care, Training, Finance Communications, Events** and **Risk Management** backgrounds.

### Next steps

To express your interest, or for more information, please contact [Alix.Lewer@include.org](mailto:Alix.Lewer@include.org) or phone 07446 897835. We ask for a brief summary of relevant professional experience (this can be via CV or Linked-In Profile, if preferred)

We look forward to Including you in our journey!

